

Snowy 2.0 Transmission Connection Project

Connecting Snowy 2.0 to the grid

Fact Sheet - November 2023



The Snowy 2.0 Transmission Connection project (STCP) will connect Snowy Hydro 2.0 into the National Electricity Market. By connecting Snowy 2.0 to the grid, the renewable energy (up to 2,000 megawatts) that has been generated and stored can be distributed within minutes when it is most needed.

To do this we will construct:

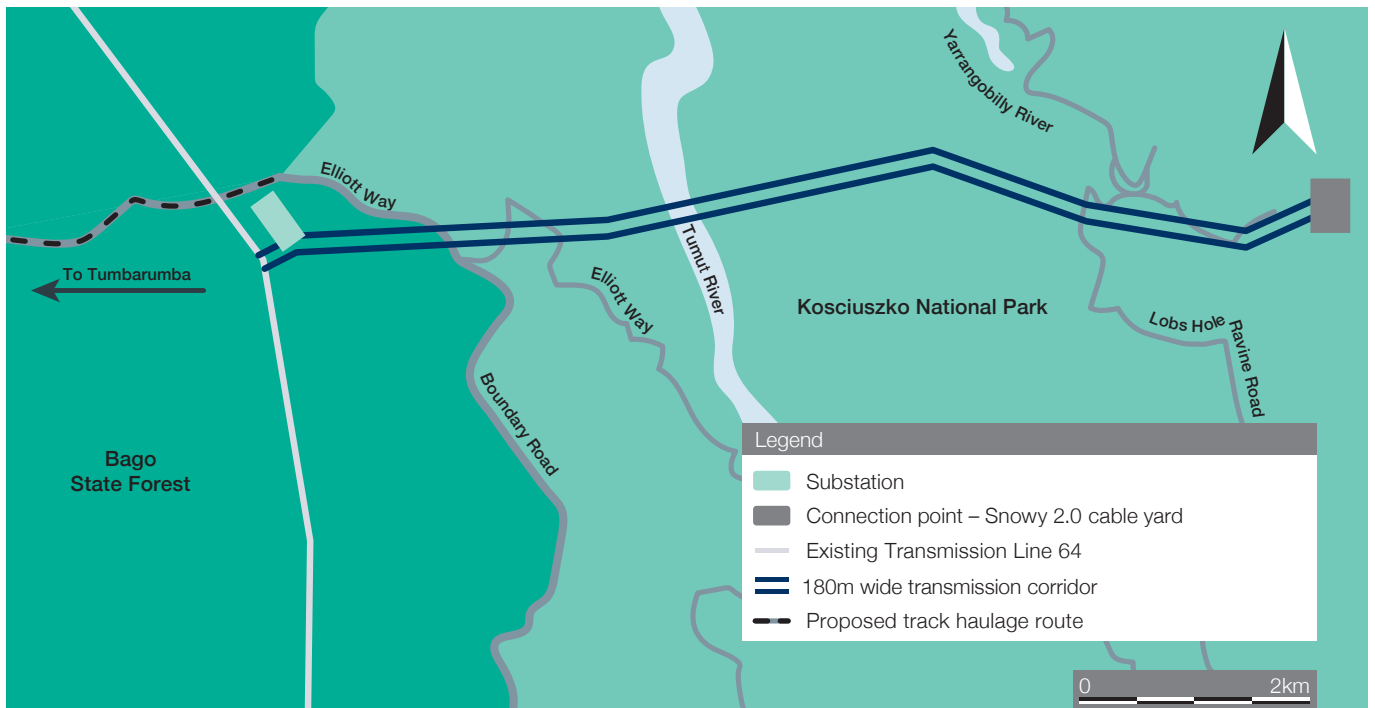
- 9km of new high voltage transmission lines which will span the Tumut River
- A switching station located in the Bago State Forest.
- And upgrade access tracks to the new switching station and transmission line structures

Where will this be built?

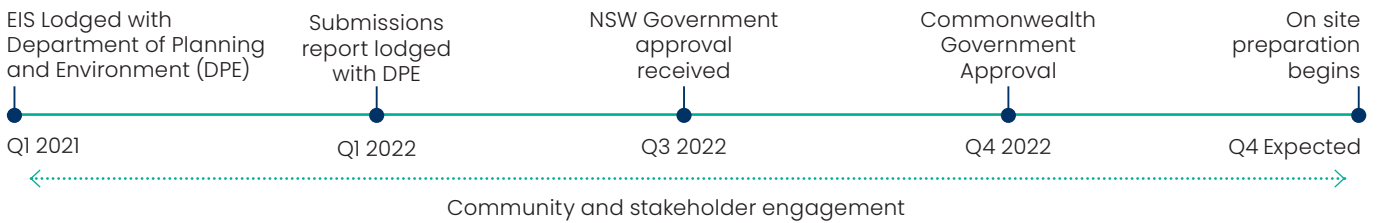
The transmission lines will be built from the Snowy 2.0 cable yard location at Lobs Hole in Kosciuszko National Park, spanning west across Talbingo Reservoir to the new switching station at Maragle, adjacent to Transgrid's existing Line 64 in Bago State Forest. Line 64 is the point of connection for the project to the grid. The project will also provide a connection point into Transgrid's southern network which will unlock the full capacity of Snowy 2.0.



LUMEA™ is Australia's leading infrastructure and energy services provider focused on servicing the renewable energy industry. Sitting as part of the Transgrid group, Lumea focuses on developing competitive commercial solutions and applying new technologies for customers across the eastern states of Australia.



Key project dates



Next steps

Lumea received NSW Government approval for the project in September 2022 followed by Commonwealth Government approval in October 2022. Lumea is now working with its contractor, UGL, to finalise project management plans submitted to the NSW Department of Planning and Environment, prior to construction.

UGL has begun mobilisation to Tumbarumba and construction is scheduled to start in late 2023.

Lumea staff will regularly be in the local area to continue consultation and engagement with the community and key stakeholders to address concerns and mitigate potential community impacts.

What to expect during construction



Timing:
2023–2026



Workforce:
Depending on project activities, up to 50 people staying and working in Tumbarumba.



Vehicle movements:

- Road works along Elliott Way to upgrade the access roads into the switching station site.
- Additional traffic movement along Elliott Way (except for during school bus travel times).
- Some heavy vehicle movements along Elliott Way, these will be signposted.



Activities:
Activities will include environmental surveys, bulk excavation, civil construction works, electrical equipment deliveries, vegetation clearing, access track works, tower construction and stringing of new lines.



Want to be kept informed? Email us on communities@lumea.com.au to join our mailing list so that we can send you project updates.

If you have any questions, concerns, or would like more information, please call or email the Lumea Community Team on [1800 674 022](tel:1800674022) or email communities@lumea.com.au.