



Snowy 2.0 Transmission Connection Project

STAKEHOLDER AND COMMUNITY ENGAGEMENT PLAN

Summary

Contents

Stakeholder and Community Engagement Plan.....	1
Background and overview.....	3
The Project	3
Project approvals.....	3
Project scope and timeline.....	3
Project area	4
Our approach to engagement	4
Engagement objectives	6
Project communities.....	7
Snowy Valleys Council Area	7
Snowy Monaro Regional Council.....	7
The regions.....	8
Community and stakeholder analysis.....	9
Engagement and mitigation measures.....	9
Current project environment.....	10
Issues identified through community consultations	10
Key messages	10
Action plans, protocols and processes	11

BACKGROUND AND OVERVIEW

THE PROJECT

The Transgrid Group comprises Transgrid, the regulated NSW and ACT Transmission Network Service Provider, and Lumea, which provides contestable energy services. The Group is the leading connector of renewable energy projects into the National Electricity Market (NEM).

Snowy Hydro Limited has engaged Lumea to build, operate and maintain the transmission line needed to connect and transmit electricity from its Snowy Hydro 2.0 project, into the national grid. Lumea has engaged Transgrid to manage the project, and UGL is to undertake the construction works.

Snowy Hydro 2.0 is the largest renewable energy project under construction in Australia. It will expand the existing Snowy Mountains Hydro-Electric Scheme by linking the Tantangara and Talbingo reservoirs through a series of underground tunnels. It will also include a new underground hydro-electric power station. It will provide an additional 2,000 megawatts (MW) of dispatchable generating capacity and approximately 350,000 megawatt hours (MWh) of large-scale storage to the NEM.

The nine-kilometre Snowy 2.0 Transmission Connection Project is vital to ensure the additional 2000MW generated by Snowy 2.0 is available at any given time in the NEM (known as ‘firming capacity’). It will ensure that energy consumers have access to reliable power; and enable Snowy 2.0 to draw excess power out of the NEM when demand is very low, in order to “charge” the “battery”. This, in turn, will help manage challenges around having too much renewable energy in the grid at any one time.

The Connection Project will create up to 140 NSW jobs during construction and goods and services will be sourced from local businesses where possible. Once built, it will also mean local power connections will be more easily available, to help pump water for fire-fighting efforts in isolated areas of the Kosciuszko National Park.

PROJECT APPROVALS

As project manager, Transgrid prepared an Environmental Impact Statement (**EIS**) on behalf of Lumea. It was submitted to the NSW Department of Planning (**DPE**) and placed on public exhibition in accordance with the relevant planning legislation. DPE received 40 submissions on the project, including 24 submissions from individual community members, six submissions from organisations, and comments from 10 government agencies. The DPE approved the project in August 2022, and Federal Government approval was granted in October 2022.

PROJECT SCOPE AND TIMELINE

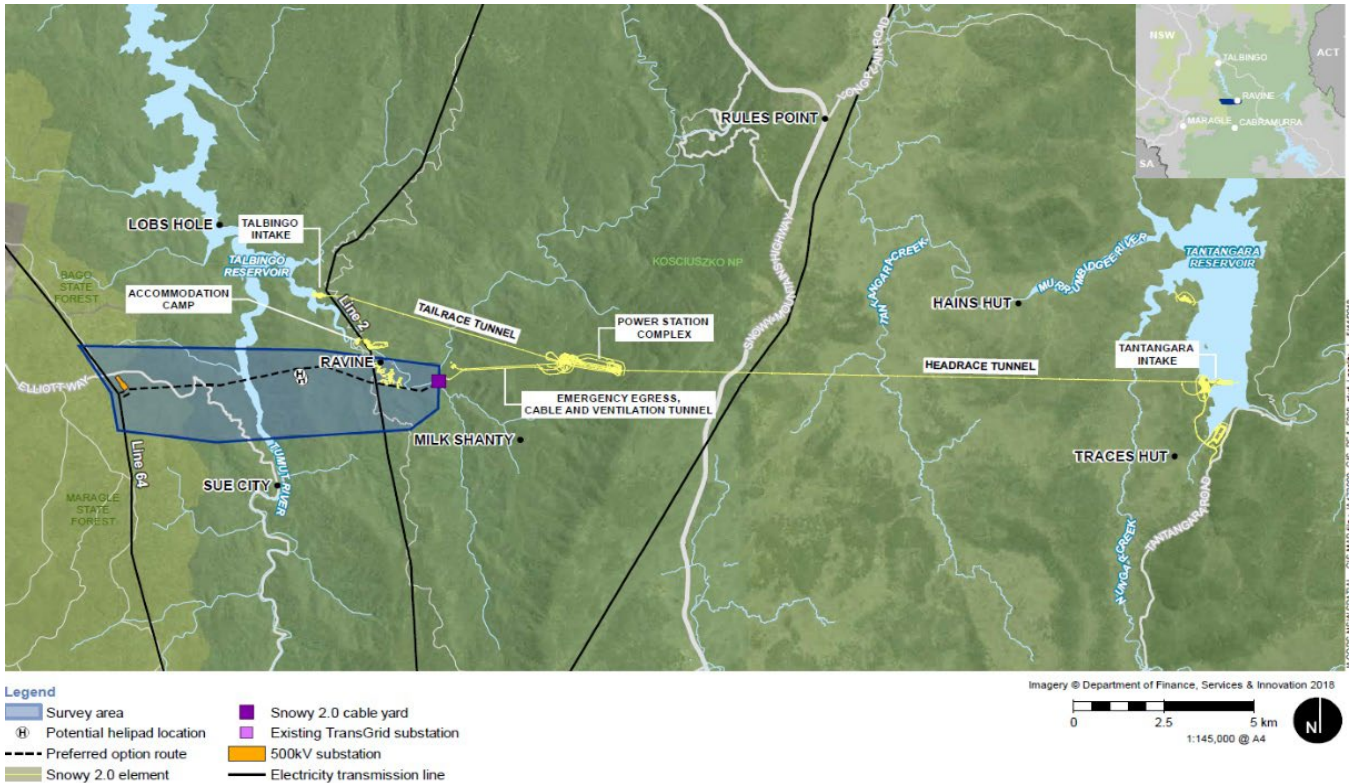
The project involves the construction and operation of new electricity transmission lines and an electricity substation to the west of the Talbingo Reservoir. This will connect the proposed Snowy 2.0 to the existing electricity transmission network at Nurenmerenmong, east of Tumbarumba. The project’s key features include:

- A new switching station within a planned 330/500kV substation, to the west of the Talbingo Reservoir near the existing Transgrid Transmission Line 64.
- Two new 330kV double-circuit transmission lines from the Snowy 2.0 generator connection site to the new substation.
- A transmission line connection between the 330/500kV substation and the existing Line 64.
- Establishment and upgrade of access tracks and roads to the new substation and transmission line structures, as required.
- Ancillary activities, including brake and winch sites, crane pads, site compounds and equipment laydown areas.

Pre-construction activities began in February 2023 and the project is expected to be finished in 2025.

PROJECT AREA

The project area crosses Kosciuszko National Park and Bago State Forest. The map below shows the area surveyed for the EIS and preferred route option connecting the Snowy 2.0 project to the NEM.



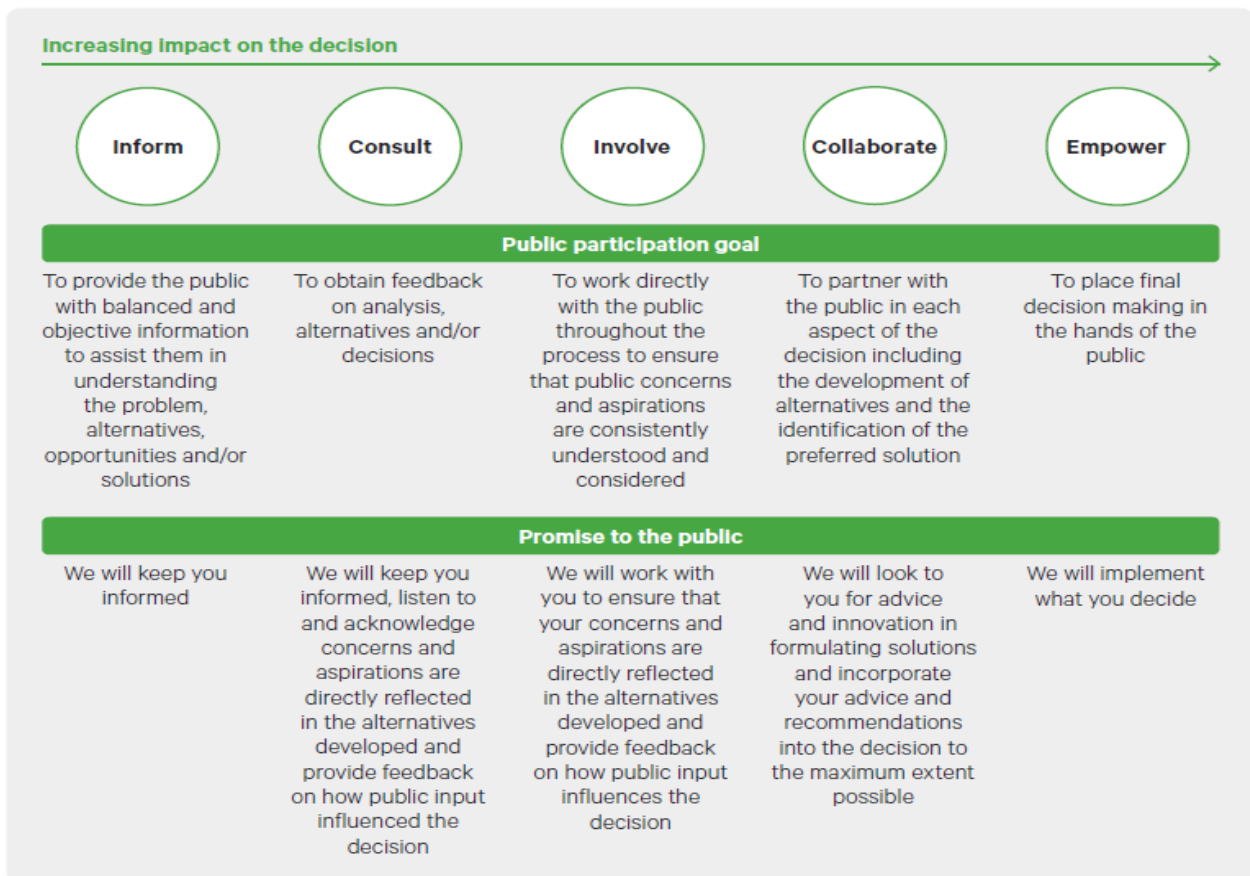
OUR APPROACH TO ENGAGEMENT

This Community and Stakeholder Engagement Plan (CSEP) outlines the engagement approach for Lumea's external facing activities with communities and stakeholders through to practical completion and handover of the asset in 2025.

Lumea places the voice of the community at the centre of our decision-making. We strive to build positive and lasting relationships with our local communities and create ongoing benefits to our customers, community and the environment as part of our commitment to building a sustainable future.

Lumea recognises the diverse engagement and information needs of the community and has committed to a robust plan of engagement that is inclusive, collaborative and clearly demonstrates its commitment to working with the community and stakeholders through open, transparent dialogue.

To achieve that, we will be guided by the framework outlined by the International Association of Public Participation (IAP2). This framework provides guidance for engaging the public and is endorsed by Lumea as the best-practice approach to community engagement. The IAP2 guidelines and practices adhere to open, transparent and inclusive engagement processes. This CSEP applies the principles and strategies in its associated action plans to deliver better outcomes for the community and stakeholders



The framework for our planning of community engagement for this project is as follows:

- Inform all identified stakeholder groups, as appropriate, on the:
 - Need for the project
 - Scope and scale of project
 - Environmental and heritage protections
 - Activities including monitoring and rehabilitation
 - Scheduling
 - Limits to access.

- Consult with:
 - Local government and elected representatives on
 - Issues of interest and concern
 - Aboriginal and relevant heritage groups on
 - Archaeological finds
 - Local business groups and community groups, on:
 - project progress
 - easement clearing

- partnership opportunities
 - notices and signage
 - service needs for contractors
 - interruptions to access.
- Involve government departments, local government, emergency services, RMS on all matters relating to:
 - Access
 - Safety of the community
 - Waste management
 - Transport
 - Environmental issues.
- Collaborate with Snowy Hydro (SHL - Client); Construction Contractor, and relevant Government Departments on all matters impacting on:
 - Compliance with Conditions of Consent
 - Construction matters
 - Contractual issues.

ENGAGEMENT OBJECTIVES

In delivering the work outlined in the CSEP we will:

- Build positive relationships with community and stakeholders.
- Provide opportunities for community and stakeholders to be engaged and involved regularly throughout the project lifecycle, ensuring that negotiable aspects of the project design reflect feedback received.
- Ensure our communities and stakeholders have access to up-to-date, regular and ongoing, inclusive and accessible information about the STCP including progress, findings, upcoming activities and key public dates.
- Demonstrate how issues and feedback have been considered in the Environmental Impact Statement (EIS), project design and delivery methodology.

There will be a staged approach to communications and engagement will be planned and delivered in conjunction with our partners and contractors and will comply with conditions of consent which relate to community and stakeholder engagement. During construction, we will provide relevant and timely information to the public; ensure that promised information is provided to stakeholders to minimise negative impacts; and act as a liaison point between Lumea, the Transgrid project team, contractors and local government.

PROJECT COMMUNITIES

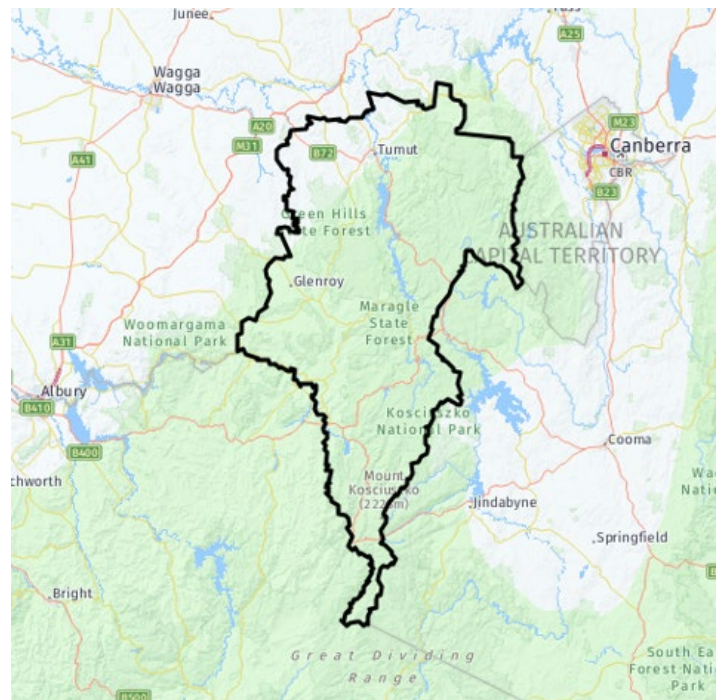
SNOWY VALLEYS COUNCIL AREA

The Snowy Valleys Council area is located in the Riverina Murray Region of New South Wales, about 200 kilometres west of the Canberra CBD, and about 400 kilometres south-west of the Sydney CBD.

The towns

Tumbarumba and Tumut are the towns closest to the project. Both areas boast significant natural beauty close to the Kosciuszko National Park and have thriving industries of tourism, agriculture and recreation.

Tumbarumba is on the western side of the Snowy Mountains and has a population of almost 2,000 people. The area has mountains, rivers, lakes, parks, forests and farms. It is bordered to the south by Mount Kosciuszko and to the west by the Murray River. Tumbarumba is mostly known for recreational activities such as bush walking, horse riding, cycling, fishing camping and wine tours. Tumbarumba is also home to forest logging, but the area was severely impacted by the 2019/2020 bushfires.



Being close to the project, it is likely that there will be economic benefit to Tumbarumba (notably those relating to food and dining as well as accommodation) throughout construction. This may include increased employment for tradespeople and labourers.

It is also most likely to be impacted by the project throughout construction by activities such as haulage and clearing. Government approvals include mitigation measures.

Tumut is situated on the banks of the Tumut River and to the north-west of the Snowy Mountains. It has a population of just over 6,000 people and has a comparable local amenity to Tumbarumba with common industries of tourism, agriculture and recreation. However, Tumut also has a thriving entertainment sector with many annual festivals. This presents increased opportunities for face-to-face engagement but brings with it the need to provide information in a timely and accessible manner as people may travel into the KNP when attending those festivals. Tumut is also likely to see increased economic activity and employment from the project.

Batlow and Adelong are other local towns. Batlow, with a population of over 1300 people, is best known for its apple and stone fruit orchards. However, it is supported by timber plantations – mainly alpine ash and radiata pine. These were devastated in the recent bushfires which also destroyed 17 homes. Adelong has a population just less than 1000. It is a historic gold mining town but is now primarily supported by sheep and cattle farming. Smaller towns include Brungle (112 people); Jingellic (61 people); Khancoban (304 people); Rosewood (214 people); Talbingo (239 people) and Tooma (104 people).

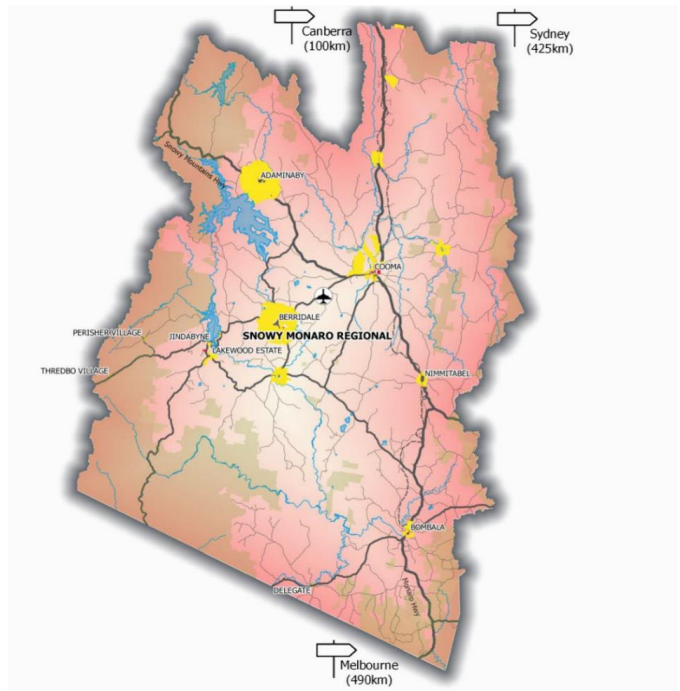
SNOWY MONARO REGIONAL COUNCIL AREA

The Snowy Monaro Regional Council area is located in south-eastern NSW, about 100 kilometres south of the Canberra CBD, and about 400 kilometres south-west of the Sydney CBD. The Council was formed on 12 May 2016 through a merger of the Bombala, Cooma-Monaro and Snowy River Shires. The three major centres are relatively distinctive. The Region is connected by air via Snowy Mountains Airport, located 16 kilometres south-west of Cooma and is also close to Canberra International Airport.

Social heritage

The Snowy Monaro Region is home to an area of Australia’s most significant ski fields in Thredbo and Perisher and to Lake Jindabyne and Lake Eucumbene – both lakes offering significant natural beauty. The area also sits at the top of both the Snowy and Murrumbidgee River catchments and presents significant environmental values, as well as being a source of fresh water for urban, recreational, irrigation and energy use. Snowy Monaro is home to Mount Kosciuszko, Australia’s highest mountain. It is key to the water storage and power generation capabilities of the Snowy Hydro complex and of the proposed Snow Hydro 2.0 initiative.

Economically the area has prioritised tourism; growing local specialisation; skills acquisition; development of industrial lands and population growth to benefit internal markets.



The towns

Cooma is close to the Murrumbidgee River. It is the main town in the Monaro region and lies on the traditional lands of the Ngarigo people. Gazetted in 1849, a century later it became the headquarters of the Snowy Mountains Scheme. The town has developed a growing tourism industry and has become known as the ‘Gateway to the Snowy Mountains’. The area is relatively dry by south-east coastal Australia standards because it falls in a rain shadow. Cooma has grown modestly over time and features retail and agriculture in its economic base. Tourism is a significant industry and leisure activities include fishing, hiking and skiing, along with visits to the Snowy Hydro scheme.

Jindabyne overlooks Lake Jindabyne near the Snowy Mountains and sits some 918 metres above sea level. It is close to the Mt Kosciuszko ski fields of Perisher, Thredbo and Charlotte Pass. It is the fastest growing centre in Snowy Monaro LGA and is heavily oriented towards tourism.

Bombala sits some 80 km south of Cooma. It lies on the banks of the Bombala River. Also, the home of the Ngarigo Aboriginal people, it was settled by Europeans in the 1830s. Industries of the area include grazing and timber while tourism is growing in importance to the local economy. The area is known for its platypus numbers.

THE REGIONS

Local issues and sentiment

Snowy Valleys LGA

Key issues relate to the impact and future prevention of bushfires and the use of agricultural land and the KNP for energy projects. The community is highly engaged with the regional characteristics – natural environment,

history and cultural heritage. They see tourism and innovation as a key to future economic success but seek better infrastructure, particularly roads, and are committed to the ongoing sustainability of their established industries.

Snowy Monaro Regional LGA

Priorities for the Snowy Monaro region include how to make the area an even better place to live with issues such as better active transport (cycle, shared pathways and footpaths), improved access to aged and disability services; addressing housing affordability and availability; mitigation and adaptation activities to address climate change; and maintaining roads and increasing road safety.

COMMUNITY AND STAKEHOLDER ANALYSIS

There are a broad range of significant stakeholders with whom the project teams and their contractors will engage. They include the following groups, although this list is not comprehensive.

- The project client – Snowy Hydro Ltd
- Government representatives (Federal, State and local), agencies and regulatory bodies representing broad interests
- Government agencies with specific interest in planning, the national and state parks, environment, energy and local community interests
- Related government agencies with an interest in local business growth, tourism or any use of the National Park for personal and leisure activities
- Project contractors
- Local councils - Snowy Valley Council and Snowy Monaro Regional Council
- The communities of Cooma, Jindabyne, Bombala, Tumut, Tumbarumba, Adelong, Batlow and others as outlined elsewhere
- Traditional Owners, Local Aboriginal Land Councils (LALC) and other Aboriginal Groups, in particular Brungle-Tumut Local Aboriginal Land Council and United Ngunnawal Elders Corporation and Ngarigo Elders
- Transgrid and Lumea customer groups
- Industry and peak associations; unions
- Regional business and community groups and enterprises, tourism and accommodation operators, environmental advocates
- Regional utility and service providers and other advisory groups; forestry bodies
- Emergency services
- Media channels - local, regional and national
- Special Interest Groups such as Environmental Defenders Office of NSW (EDO NSW); Australian Conservation Foundation; Nature Conservation Council; Total Environment Centre; Landcare; National Parks Association of NSW.

ENGAGEMENT AND MITIGATION MEASURES

CURRENT PROJECT ENVIRONMENT

The Snowy 2.0 Transmission Connection Project is a major project that interests, impacts and involves a wide range of public audiences and stakeholders. The project is subject to ongoing and rigorous scrutiny in terms of the quality of public engagement, cost, timeliness of delivery, operations and feasibility, in addition to its impacts on the community and stakeholders.

IDENTIFICATION OF ISSUES AND MITIGATION MEASURES

Issues or concerns about the project may arise as it progresses.

Specific community and stakeholder feedback will be addressed in the project's management meetings.

It is likely that community concerns about project impacts will arise as work commences and the effects of operations, particularly easement clearing, become visible to the general community. While the community and broader stakeholders have been well briefed through the EIS process, the twin effects of major bushfires and of Covid may have reduced local recognition of the meaning of information shared with them.

In particular visual amenity and easement clearing may cause some concern.

The landscape clearing – 9 km long and 140 metres wide, rising and falling with the topography - will be visible to vehicle traffic, to visitors to lookouts, to people flying overhead on routes between NSW and Victoria and to people using the park for recreational purposes, many of whom will be keenly interested not only in the passive values of the park, but also in its ecological and cultural heritage values, the sustainability of flora and fauna populations and the protection of waterways.

During the development of the Environmental Impact Assessment (EIS), the Transgrid Group consulted with key stakeholders. This identified clearing in the KNP as an issue likely to cause concern among environmental groups in particular.

ISSUES IDENTIFIED THROUGH COMMUNITY CONSULTATIONS

Of the 40 submissions received during the EIS process, the most focus was on:

- Any potential to use an underground connection to reduce the project's environmental impact, particularly for biodiversity and visual aspects
- Project impacts - economic, environmental and social
- Biodiversity including the ecological values of Kosciuszko National Park (KNP)
- Impacts on natural and cultural heritage values of KNP
- Visual amenity impacts from vegetation clearing and the presence of new transmission infrastructure
- Environmental assessment and approvals process in line with statutory requirements.

KEY MESSAGES

A comprehensive set of approved key messages are vital to ensure that communication with the community relating to the STCP is consistent, accurate and up to date.

Documents for the STCP outlining approved key messages and clarifying answers to frequently asked questions' have been developed and will be maintained to ensure efficient and consistent responses to incoming project enquiries.

The key messages describe the project and are for use when speaking with stakeholders, members of the public and other key stakeholders. They will be revised from time to time to ensure currency.

Detailed information about the analysis and assessment of environmental impacts are available in the Environmental Impact Statement and related documentation.

Copies of the reports and government approvals are available on the Lumea website (www.lumea.com.au), or through the NSW Department of Planning and Environment. (<https://pp.planningportal.nsw.gov.au/major-projects/projects/snowy-20-transmission-connection>). Information on how to connect with the team is also available on the Lumea website.

ACTION PLANS, PROTOCOLS AND PROCESSES

Earlier milestone stages of this project have been completed. This Community and Stakeholder Engagement Plan relates to the activities that will happen during construction.

Prior to start of construction the focus has been to:

- Analyse the issues raised in the EIS submission and Conditions of Consent and incorporate them into the detailed forward planning.
- Collaborate with other parties to ensure the community needs are met.
- Work closely with UGL, the nominated contractor to ensure engagement plans for the construction period are consistent and cater to both works needs and general community engagement.
- Notify stakeholders of the approval, the related conditions and the detailed construction planning.
- Provide relevant and accurate information.
- Liaise with the project team and nominated contractor/s to ensure that concerns raised by stakeholders are included in the planning; to consider the legacy projects requested by Council and to ensure that benefits accruing from the project activities are shared with the local community.
- Discuss the project details to ensure that the needs of the local community in terms of traffic movement, access to the park etc are fully understood.
- Ensure activities, outcomes and complaints are documented in a timely manner.

The engagement focus during construction will be to:

- Hold regular meetings (in person or virtual) with the project team and contractor/s to understand forward works and minimise complaints by ensuring that work notifications to the public are timely and relevant through signage, email newsletters and media channels.
- Hold toolbox chats with work teams to reinforce Lumea expectations around behaviour and engagement and explain regulatory requirements.
- Respond to complaints and seek to resolve them.
- Attend community and stakeholder meetings and events to explain the project and Lumea's approach to meeting the requirements of the EIS, the details of limits to use of the KNP, and seasonal impacts on accommodation and traffic.
- Plan Community Partnership Projects with local stakeholders and Snowy Hydro Ltd.
- Meet regulatory requirements in regard to community engagement and conditions of consent.

- Document engagement through Consultation Manager to facilitate reporting and accountability.

This action plan will be adjusted as required and will be reviewed regularly against project progress.