



Snowy 2.0 Connection Project

Connecting Snowy 2.0 to the grid

Fact Sheet – April 2023

Lumea 

A new transmission connection and substation is proposed to connect Snowy 2.0 to the National Electricity Market (NEM). Snowy 2.0 is a pumped hydro expansion of the existing Snowy Scheme planned by Snowy Hydro Limited with an anticipated capacity of 2000 megawatts.

Why is a connection necessary?

New generation assets need to be connected to the transmission network to be able to operate within the NEM. Snowy 2.0 requires this transmission and substation connection to connect their generation into the existing transmission network to therefore unlock the full capacity of the Snowy 2.0 project.

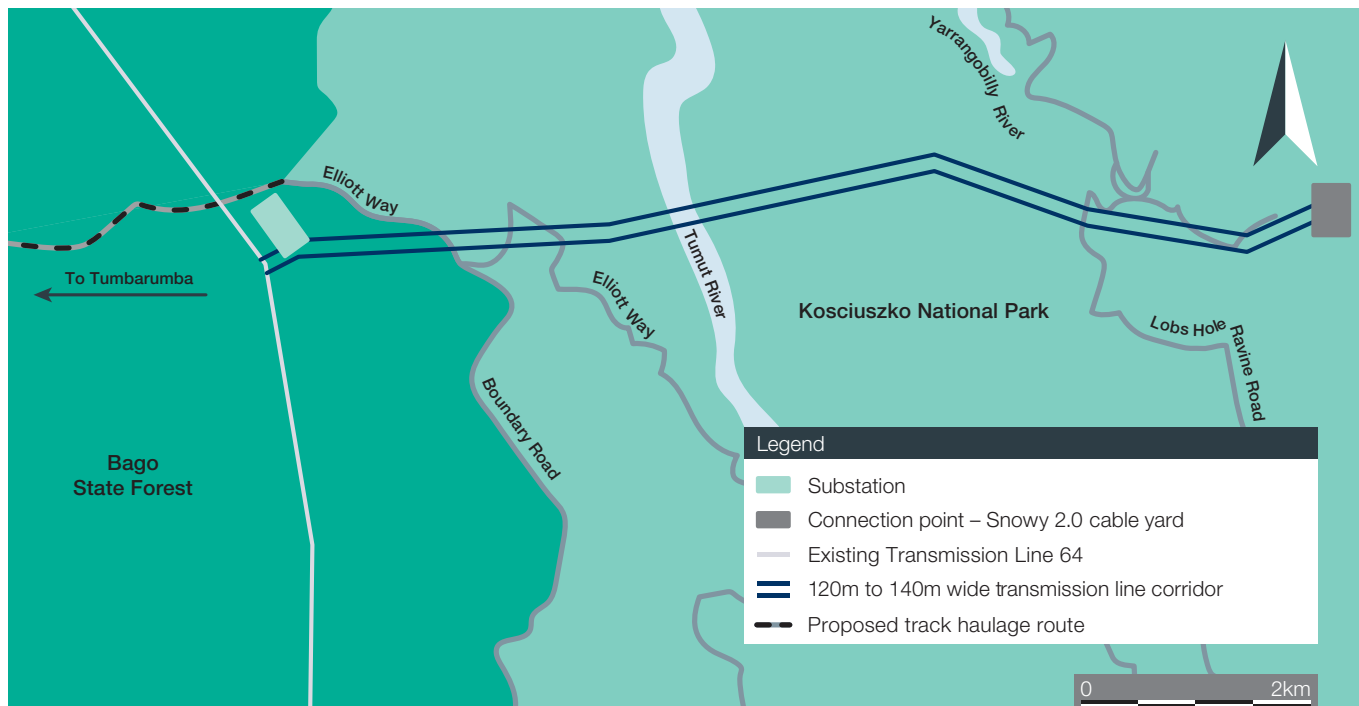
What is Lumea proposing?

Lumea is proposing to construct and operate a dual 330kV double circuit overhead transmission connection and substation to meet the grid connection requirements of Snowy 2.0. The two lines would be side-by-side, spanning from the Snowy 2.0 generator site through Kosciuszko National Park to the new substation located in Bago State Forest, adjacent to Transgrid's existing Transmission Line 64. The length of the connection is approximately 9 kilometres. See map over page.

What are the project benefits?

- The project will enable 2,000 MW of flexible, on-demand power, or 350,000 MWh of long-duration storage while reusing or 'recycling' the water in a closed loop system to maximise the efficiency of the available resources.
- Up to 140 new jobs in NSW will be created during construction.
- Goods and services from local businesses will be preferred during construction, and these opportunities will be promoted through the Industry Capability Network.
- The project will contribute to a clean energy future.

LUMEA™ is Australia's leading infrastructure and energy services provider focused on servicing the renewable energy industry. Sitting as part of the Transgrid group, Lumea focuses on developing competitive commercial solutions and applying new technologies for customers across the eastern states of Australia.



Key project dates



Next steps

Lumea received NSW Government approval for the project in September 2022 followed by Commonwealth Government approval in October 2022. Lumea is now working with its contractor, UGL, to finalise project management plans for submission to the NSW Department of Planning and Environment, prior to construction.

UGL has begun mobilisation to Tumbarumba and construction is scheduled to start in late 2023.

Lumea staff will regularly be in the local area to continue consultation and engagement with the community and key stakeholders to address concerns and mitigate potential community impacts.

What to expect when construction work is carried out



Timing:
2023–2025



Workforce:
Up to 140 workers during peak construction



Vehicle movements:
During peak construction the proposed activities would generate up to 80 light vehicle and 75 heavy vehicle movements per day



Activities:
Bulk excavation, civil construction works, electrical equipment deliveries, vegetation clearing, access track works, tower construction and stringing of new lines



Contact the project team:

Phone 1800 674 022 (toll-free) Email community@lumea.com.au

Find out more at: lumea.com.au