



Lumea Carrier Ethernet

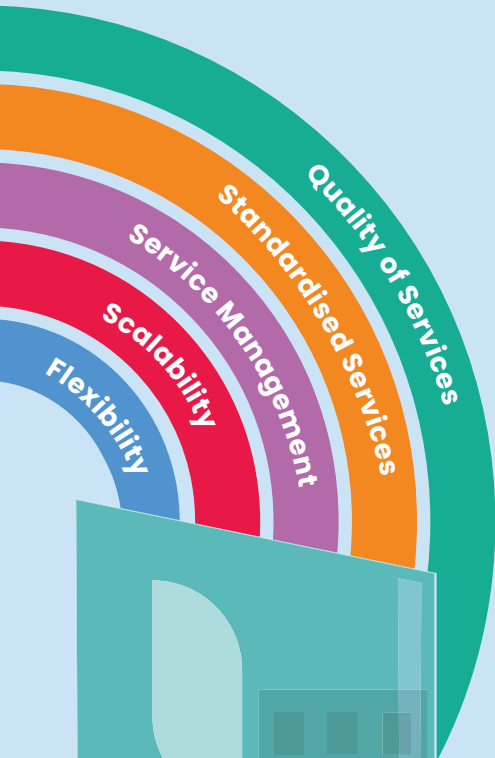


Network solutions
that help your
business grow

lumea.com.au

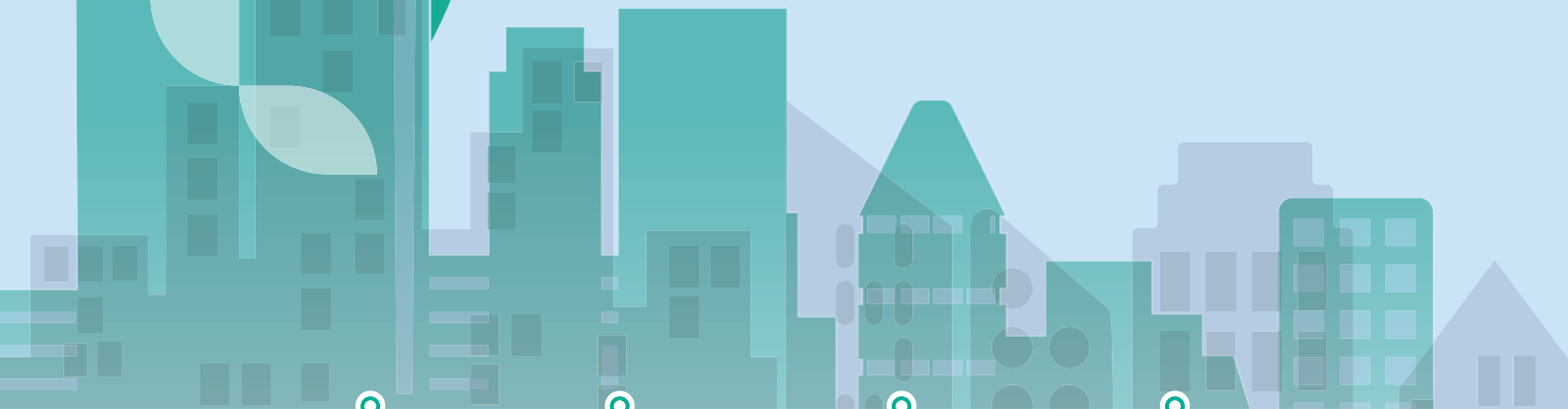
What is Lumea Carrier Ethernet?

Lumea Carrier Ethernet (LCE) is a scalable, reliable and feature-rich Carrier Ethernet network solution for all businesses.



Designed to the Metro Ethernet Forum (MEF 3.0 CE) standard, LCE provides flexible bandwidth increments and standardised services features that gives you the ability to carry different service attributes using one technology.

LCE can accommodate multiple traffic types, including voice and video, as well as non-IP based traffic. LCE is a Layer 2 Virtual Private Network (VPN) solutions which gives you a simple alternative to the traditional Layer 3 IP VPNs.



Features and benefits	Scalability	Privacy	Coverage	Deliver fast, highly reliable services
LCE enables your growing businesses to scale in a dynamic business environment	Supports speed ranging from 2Mbps to 4Gbps	Secure Layer 2 connectivity supporting point-to-point or point-to-multipoint connections	LCE network offers CBD, Metro, regional and NBN POI coverage using aerial and underground fibre	Lumea's network offers low network latency

Technical Specifications

Attribute	Lumea Wavelength options
Ethernet Type	EPL, EPL-LAN, Access-EPL EVPL, EVP-LAN, Access-EVPL
Service Bandwidth	CIR/EIR, up to 10Gbps
Class of Service	Three CoS Labels - L, M, H
CoS Profile	Single Class: L, M, H Multi Class no bandwidth sharing: LM, LH, MH, LMH Multi Class with bandwidth sharing: LM, LH, LMH
Default EVC MTU Size	9,000 bytes (9,080 bytes for business nbn Enterprise Ethernet access)
Layer 2 Control Protocol (L2CP) handling	L2CP Transparency
UNI Port Speed Negotiation	Auto or Fixed
IEEE 802.1p Support	Support p-bit transparency
EVPL CE CoS ID Preservation	Not Supported (Same or different tag will be rewritten at the egress)
EVP-LAN CE VLAN Preservation	Not Supported (Same or different tag will be rewritten at the egress)
CE-VLAN to EVC Mapping	EPL, EP-LAN- Support "All to one" bundling EVC mapping EVPL, EVP-LAN,- Support 'One to one' or 'Many to one' bundling mapping
UNI Physical Interface	100Base-TX, 1000Base-TX, 1000Base-SX/LX, 10GBase-LR/ER
UNI Protection	Support Link Aggregation Group (LAG) across 2 or more UNIs
Available Bandwidth Increments (in Mbps)	2 to 10 at 2M increments 10 to 100 at 10M increments 100 to 500 at 50M increments 500 to 1,000 at 100M increments 1,000 to 4,000 at 500M increments
UNI Ingress/Egress Bandwidth	Based upon CIR, CBS, EIR, EBS, CM, CF CM = Colour Blind CF = Unspecified
Broadcast, Unicast & Multicast (BUM) Traffic	Support by default on E-LINE and E-Access services; police at 20Mbps on ingress for EP-LAN & EVP-LAN
Ethernet OAM	Support IEEE 802.1ag/ITU Y.1731; level 6 & 7 available for customer uses

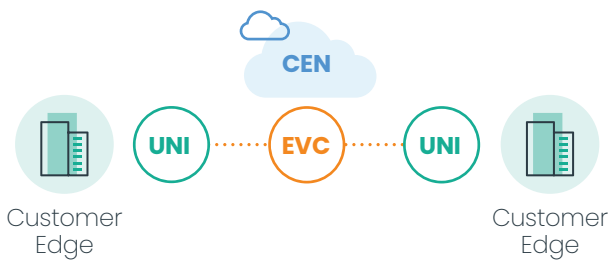
How it works

E-Line Service

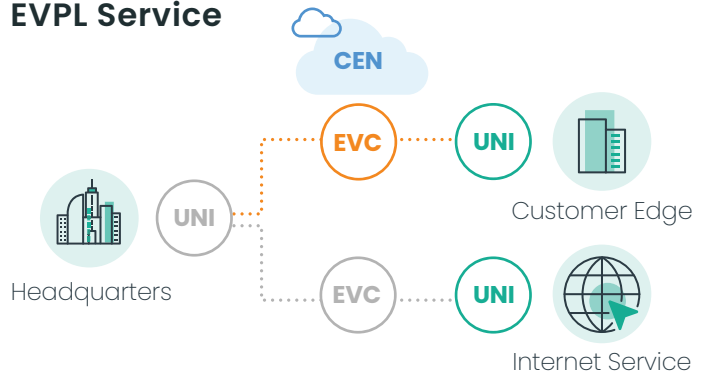
LCE E-Line is available in point-to-point or point-to-multipoint configurations, providing unmatched connectivity across geographically dispersed sites:

- High-performance with dedicated bandwidth and fast response times.
- Flexible and scalable, with your choice of bandwidth from 2Mbps to 4Gbps.
- Designed to MEF 3.0 CE standard and MPLS traffic engineered network.

EPL Service



EVPL Service



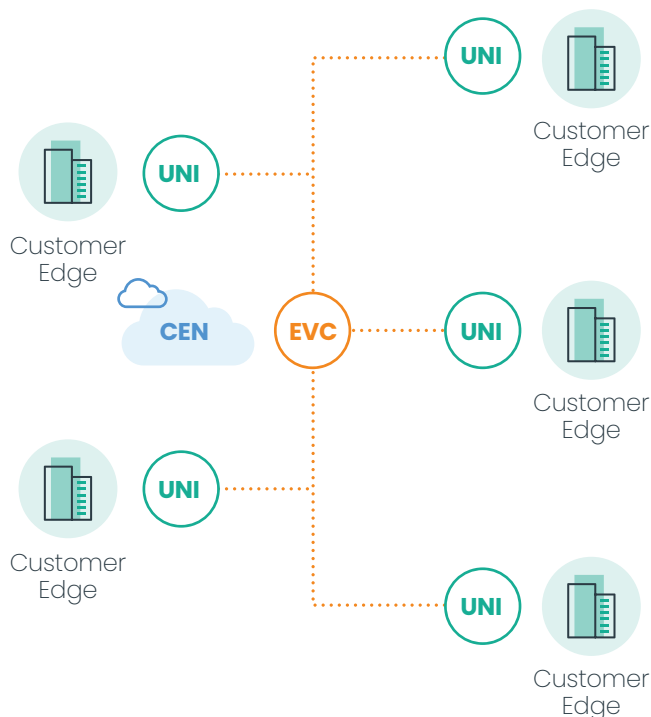
E-LAN Service

E-LAN service is a multipoint-to-multipoint Ethernet service between two or more sites using a multipoint-to-multipoint EVC.

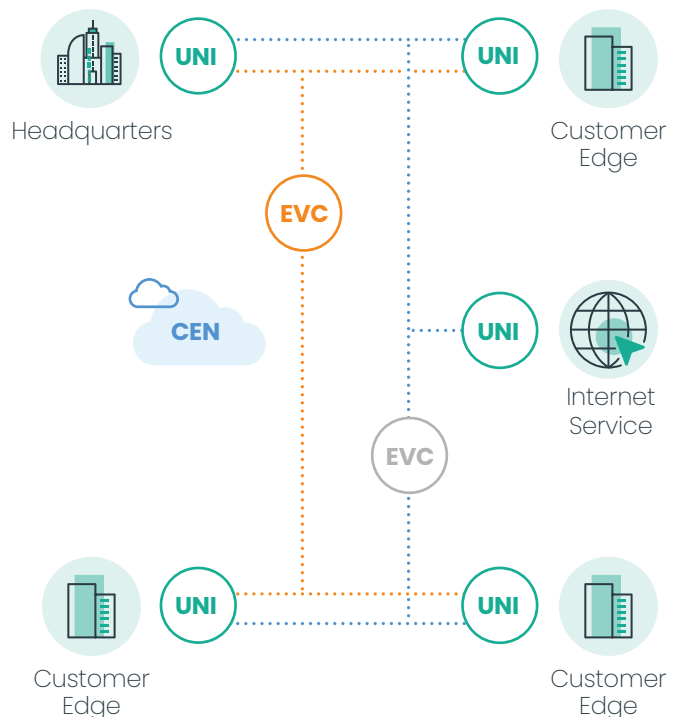
Bespoke private Ethernet service utilising carrier grade network:

- Any-to-any Ethernet configuration providing full mesh connectivity.
- Manage your own VPN through scalable and secure multipoint connectivity.
- Maintain discrete pathways, creating separate domains for specific applications or departments on a single network.

EP-LAN Service



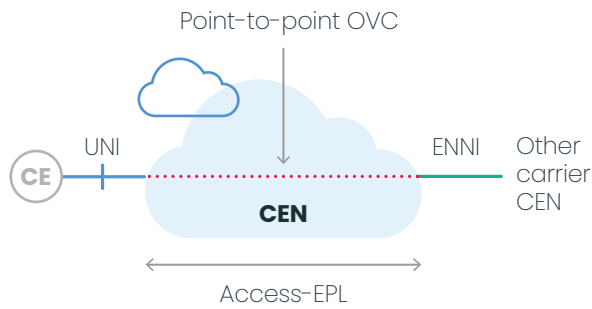
EVP-LAN Service



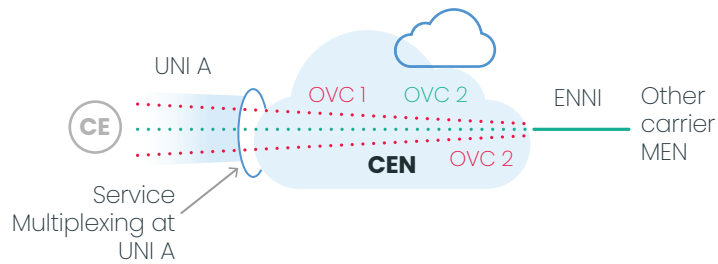
E-Access Service

An E-Access Service type defines an access service type that uses an Operator Virtual Circuit (OVC) that associates at least one UNI OVC End Point and one External Network Interface (ENNI) OVC End Point. An OVC is the building block for constructing an EVC spanning multiple Operator Carrier Ethernet networks. Two services variants for E-Access service which shared similar service attribute definitions as EPL and EVPL are defined below.

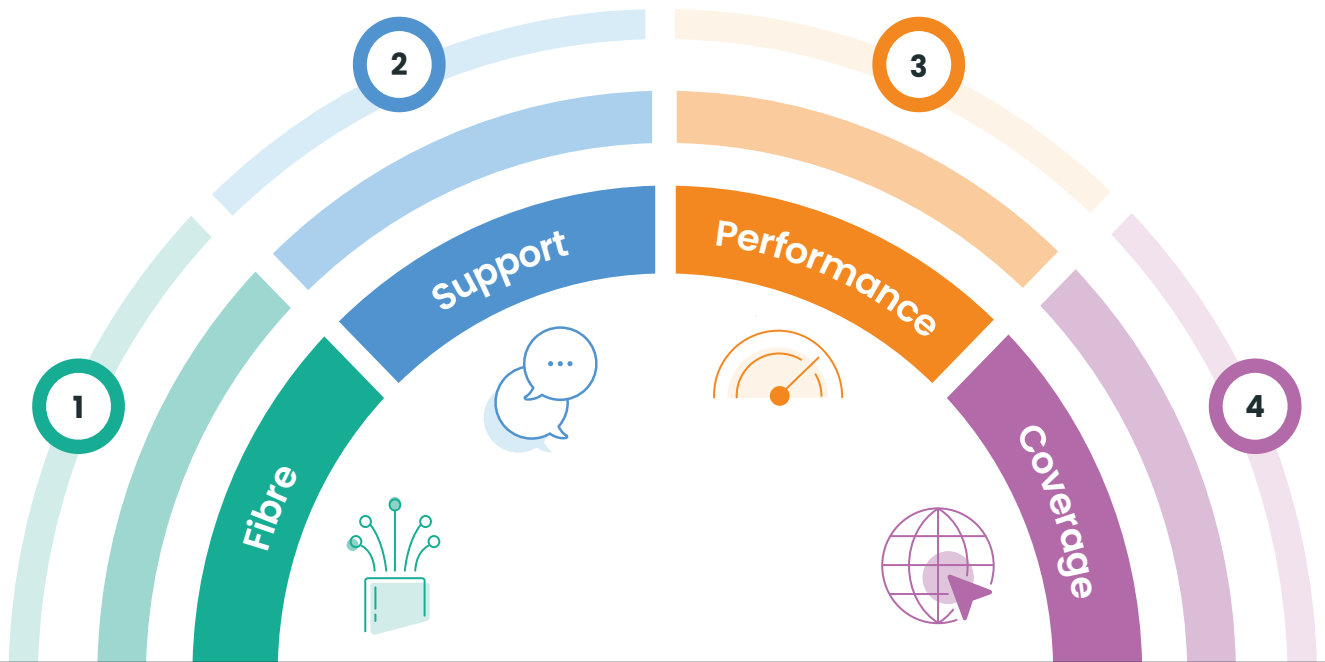
Access EPL Service



Access EVPL Service




Why choose Lumea?



- Established infrastructure asset with over 15 years experience.
- Experienced team and network resources to meet your requirements.
- High standard of quality control, procedure and service assurance process.
- Specialist service provider of telecommunication services.
- Bespoke solutions.
- Extensive regional Point of Presence (PoP).
- Secure and diverse network via Optical Ground Wire (OPGW) network.

Find out more



What we do

telco.sales@lumea.com.au

1800 533 825

[LinkedIn](#)



Your pathway to better connectivity

lumea.com.au